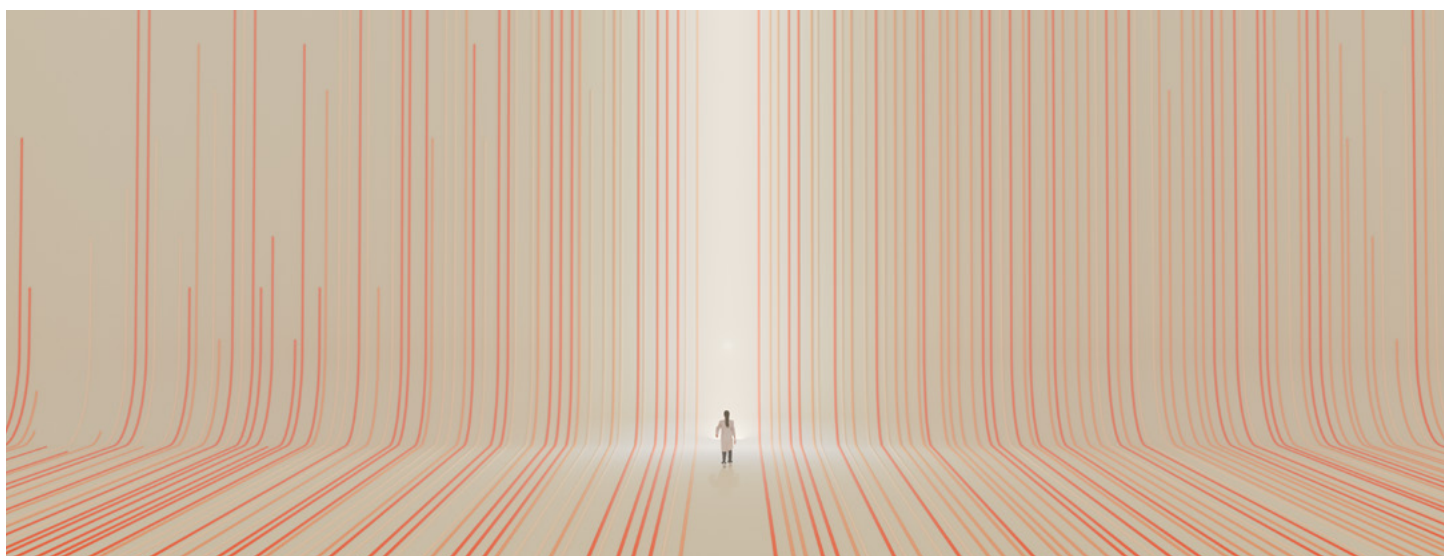


# ScienceDirect AI: Eureka, *every day*.

R&D professionals require quick access to insights to drive innovation and reduce risks. Ineffective methods for extracting and summarizing critical information can lead to overlooked findings, wasting time and exposing teams to significant business risks.

ScienceDirect AI is a workflow companion that enables researchers to explore, compare and uncover insights from deep within the full-text of quality peer-reviewed literature, with one click.



Knowledge discovery made efficient and rewarding,  
based on *trusted content*.

## Ask ScienceDirect AI

- Generate insights across 14 million peer-reviewed research articles and book chapters.
- Use natural language queries to retrieve precise, relevant results.
- Summarized responses include in-text references, linking directly to source content.

## Reading Assistant

- A versatile tool for summarizing, analyzing, and answering questions about individual articles.
- Available for all full-text articles and book chapters on ScienceDirect (subject to entitlement).
- Offers follow-up query functionality, making interactions conversational and dynamic.

## Compare Experiments

- Compare experiments within and across publications
- Summarize goals, materials, methods and results across multiple source documents.
- Save time with instant exports for convenient sharing and offline access.

## My Library

- Save references directly into your Mendeley Library and access your Mendeley Library directly in ScienceDirect.

## Agentic Approach and Hybrid Search

- Utilizing an agentic approach, the Copilot tool optimizes queries: fixes typos, expands abbreviations, and translates where needed.
- Hybrid search combines natural language and keyword queries for maximum relevance.

## Unlock new value with GenAI on ScienceDirect

ScienceDirect AI integrates seamlessly into ScienceDirect, the platform you already use. With this integration, you can access an advanced AI tool without having to adapt to a new environment.

## What happens in ScienceDirect AI stays in ScienceDirect AI

We use private, secure versions of large language models. Queries are kept securely, and they are strictly used only to provide responses to end users, and not to train models or create any derivative products such as auto suggestions.

## Count on Responsible AI

ScienceDirect AI and all AI solutions from Elsevier follow these [Responsible AI Principles](#): We consider real-world impacts, prevent unfair bias, explain our solutions, ensure human oversight, and respect privacy with strong data governance.

Our policies, standards and guidelines are fully certified under ISO/IEC 27001:2013.

## ScienceDirect AI users are saying ...

*"What once took three weeks now takes just a week and a half—saving me over 50% of my time. Unlike keyword-based searches, ScienceDirect AI delivers well-structured references directly relevant to my research question."*

**—R&D Manager, a leading global food manufacturer**

*"The AI features on ScienceDirect have significantly boosted my efficiency. I'd rate these features a solid 9 or 10 for how much they enhance my workflow, especially when I'm starting from scratch."*

**—Director Medical Affairs, a leading biotech company**



## Get ScienceDirect AI for your organization

By combining trusted ScienceDirect content with the power of GenAI, your teams can streamline their research process, allowing them to focus more on advancing breakthrough ideas and driving innovation forward efficiently.

For more information, [contact us](#) today or visit [elsevier.com/products/sciencedirect/sciencedirect-ai](https://elsevier.com/products/sciencedirect/sciencedirect-ai)



Advancing human progress together